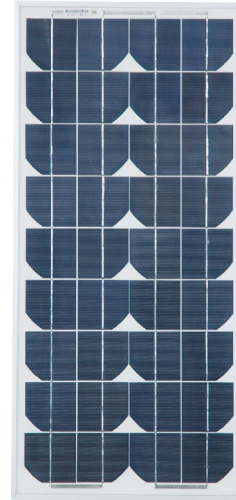




# CANADIAN SOLAR

## CS5E-15/18/20

CS5E Series is designed for powering small commercial application and consumer products



### KEY FEATURES

---

- 36 high-efficiency solar cells
- High-transparency low-iron tempered glass with enhanced stiffness and impact resistance
- Advance EVA encapsulation system with multilayer backsheets to better protect modules

### APPLICATIONS

---

- Power source for remote telecommunication equipment
- Monitoring systems for the oil & gas industry
- Traffic, security, environment, and other remote monitoring and signaling systems
- Water pumping systems
- Rural electrification
- Small home power systems
- 12V or 24V battery charging system
- Other industrial and consumer applications

### CERTIFICATIONS

---

#### Module Certificates

- IEC 61215, CE



\* IEC 61215 Certified Models CS5E-18P, CS5E-15P

#### Factory Certificates

- ISO 9001:2000, ISO/TS 16949:2002
- QC 080000

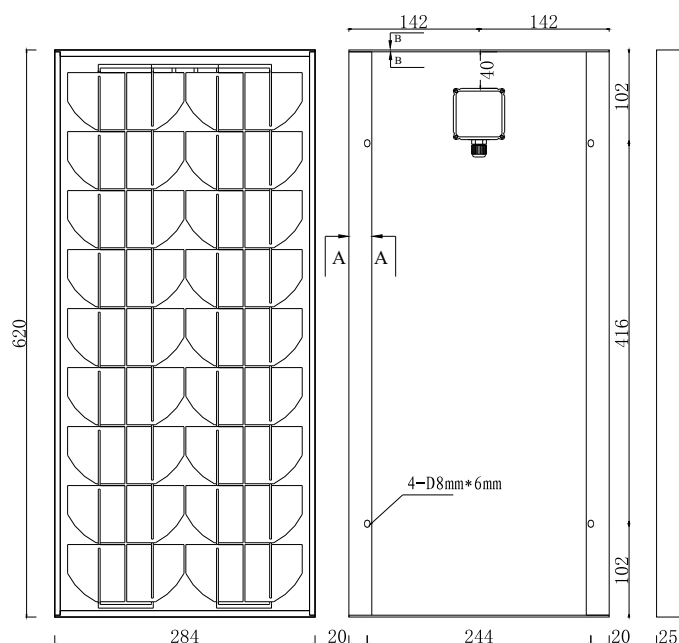


### WARRANTY

---

- Warranty terms upon request

## Mechanical Specifications



Dimensions		
Length*Width*Depth	mm (in)	620×284×25 (24.4×11.2×1.0)
Weight	kg (lbs)	2.5 (5.5)

Cells	
Cell Material	Mono or Polycrystalline
Number of Cells	36

## Electrical Characteristics

### Electrical Performance

Under Standard Test Conditions (STC) of irradiance of 1000W/m<sup>2</sup>, spectrum AM 1.5 and cell temperature of 25°C

		CS5E-15	CS5E-18	CS5E-20
Maximum Power	P <sub>max</sub>	15W	18W	20W
Voltage at Maximum Power	V <sub>mp</sub>	17.0V	17.0V	17.2V
Current at Maximum Power	I <sub>mp</sub>	0.89A	1.06A	1.16A
Open Circuit Voltage	V <sub>oc</sub>	21.0V	21.2V	21.2V
Short Circuit Current	I <sub>sc</sub>	1.00A	1.13A	1.26A
Maximum System Voltage		715V		
Temperature Coefficient	Voltage (V <sub>oc</sub> )	-79±10 mV/°C		
	Current (I <sub>sc</sub> )	0.065±0.015 %/°C		

\*NOCT (Normal Operating Cell Temperature): 45°C

\*\*Module power tolerance: ±2W (approx. ±10%)

\*Specifications included in this datasheet are subject to change without prior notice.